

BUILDS ON COMMUNITY VISION

Aligns mobility improvement implementation with community priorities and vision

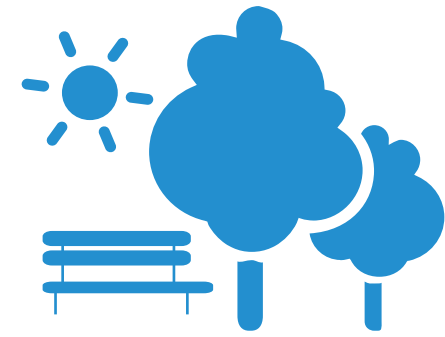
- Degree of consistency with planned projects and/or goals in existing mobility and public realm plans
- Supportiveness of modal plan priorities and consistency with City street typology
- Attracts or leverages other local, regional, federal or private funding
- Improves travel times and safe access to jobs, education, healthcare, social services and affordable housing



PRIORITIZES SUSTAINABLE TRANSPORTATION OPTIONS

Increases accessibility and convenience for people walking, biking, and taking transit to support growth and accommodate Seattle Center events

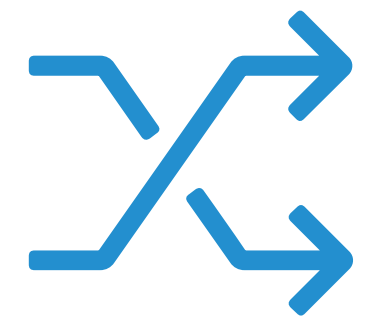
- Contributes to the completion of the Center City Bike Network; addresses gaps in the bicycle network
- Addresses desire to have dedicated and protected roadway space for transit, bicycle and pedestrian travel
- Improves transit travel time, transit reliability, and/or addresses transit capacity issues
- Creates hubs that are great places for people and functional connections between transit and other travel modes



ENHANCES THE PUBLIC REALM

Enhances the public realm to create attractive places to walk, bike, ride transit, and play in North Downtown

- Contributes to planned public spaces and special-use streets
- Improves quality of streetscapes (e.g., more pedestrian-scale lighting, street furniture improvements, seating, art, creative and playful elements, and other public amenities)
- Increases landscaping and green infrastructure (e.g. # of trees, storm water features)
- Improves transit transfer and boarding experience



IMPROVES CONNECTIVITY

Increases connectivity between North Downtown and adjacent neighborhoods

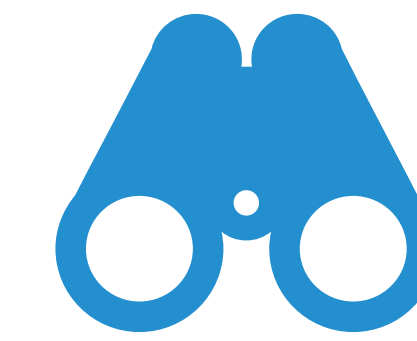
- Provide wayfinding and traveler information that makes navigating North Downtown easy and intuitive
- Reduces east-west and north-south travel time for motorists, transit riders and cyclists through key corridors
- Improves multimodal access to key destinations, including passenger pick-up/drop-off, commercial loading, and bicycle parking
- Improves or maintains freight and general purpose traffic travel time and reliability in key corridors



INCREASES SAFETY

Enables safe access for all, regardless of age, ability, or transportation mode choice

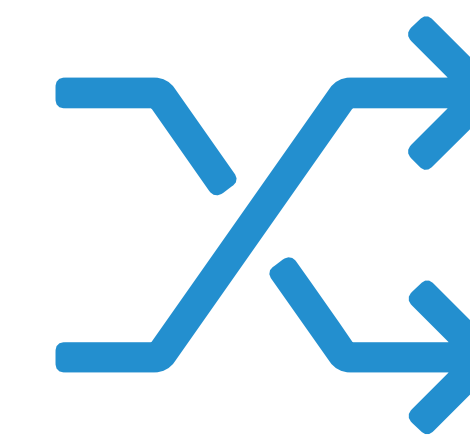
- Improves visibility and safety for non-motorized users (e.g., well-marked pedestrian crossings, number of pedestrian bulb outs, transit station visibility and other safety features)
- Provides opportunity to improve ADA accessibility
- Contributes to safe and accessible sidewalks and intersections (e.g., ramps, striped crossings, signalization, pedestrian timing, etc.)
- Addresses location with high rate of or potential for serious crashes, including intersections and corridors



BUILDS ON
COMMUNITY VISION



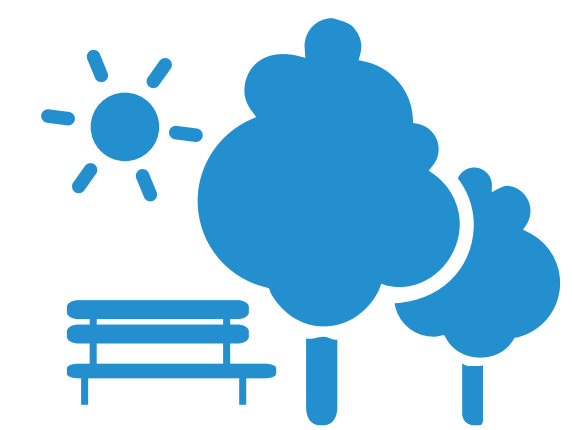
INCREASES
SAFETY



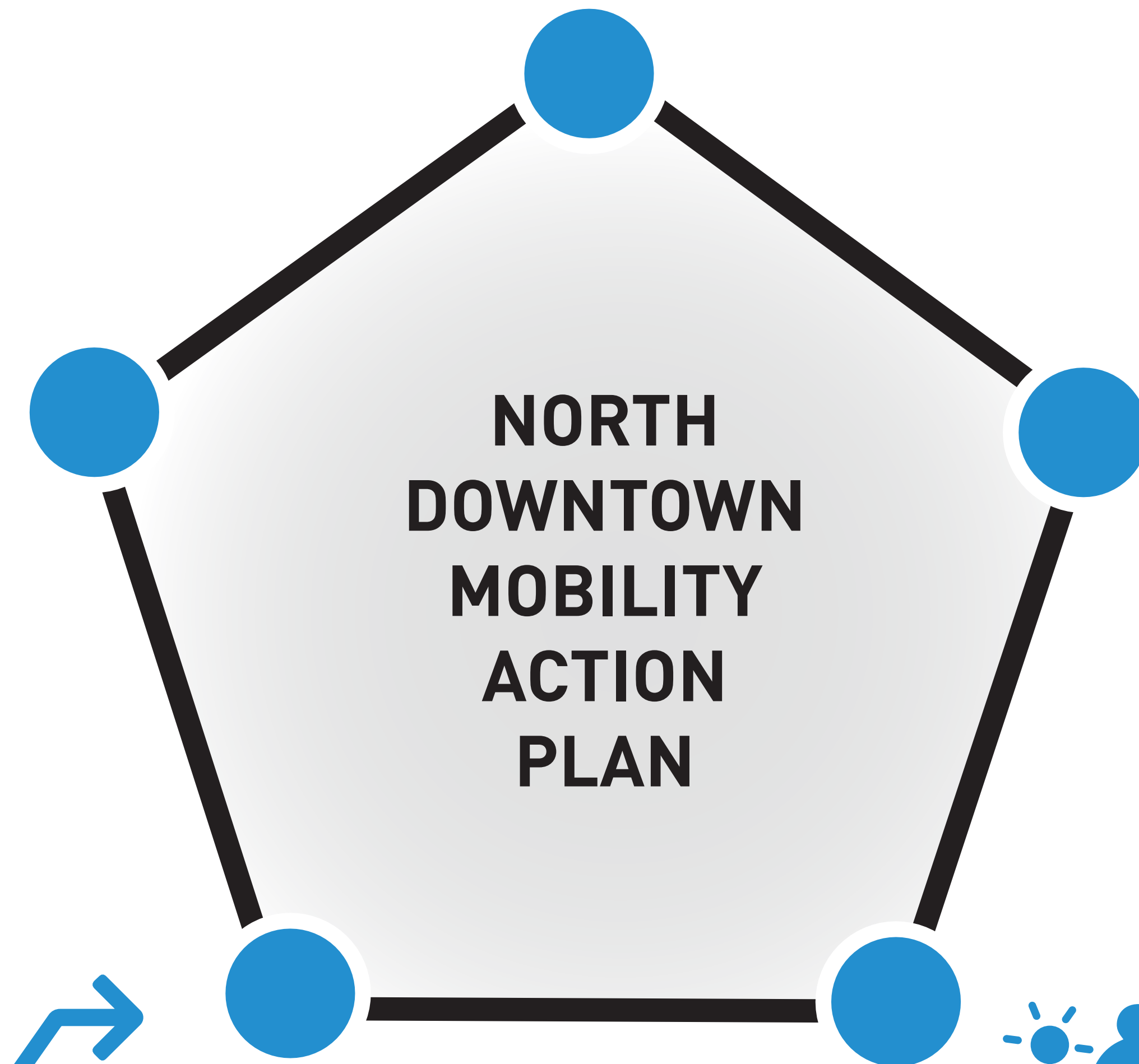
IMPROVES
CONNECTIVITY



PRIORITIZES
SUSTAINABLE
TRANSPORTATION
OPTIONS



ENHANCES THE
PUBLIC REALM



Guiding Principles Evaluation Criteria

North Downtown Mobility Action Plan
March 2018