



FACT SHEET

# 1ST AVE NE STREET IMPROVEMENTS

## A part of the Northgate Ped/Bike Bridge project

Winter 2019

### PROJECT OVERVIEW

With Link light rail and the Northgate Ped/Bike Bridge coming soon to Northgate, we've designed improvements to 1st Ave NE to make it easier to access the pedestrian bridge and light rail station, and to move around Northgate and Maple Leaf.

### 1ST AVE NE FEATURES

Along with bridge construction in 2020 and before light rail arrives in 2021, 1st Ave NE will be restored and include a new 2-way protected bike lane (PBL), between 92nd and 103rd along the west side of the street.

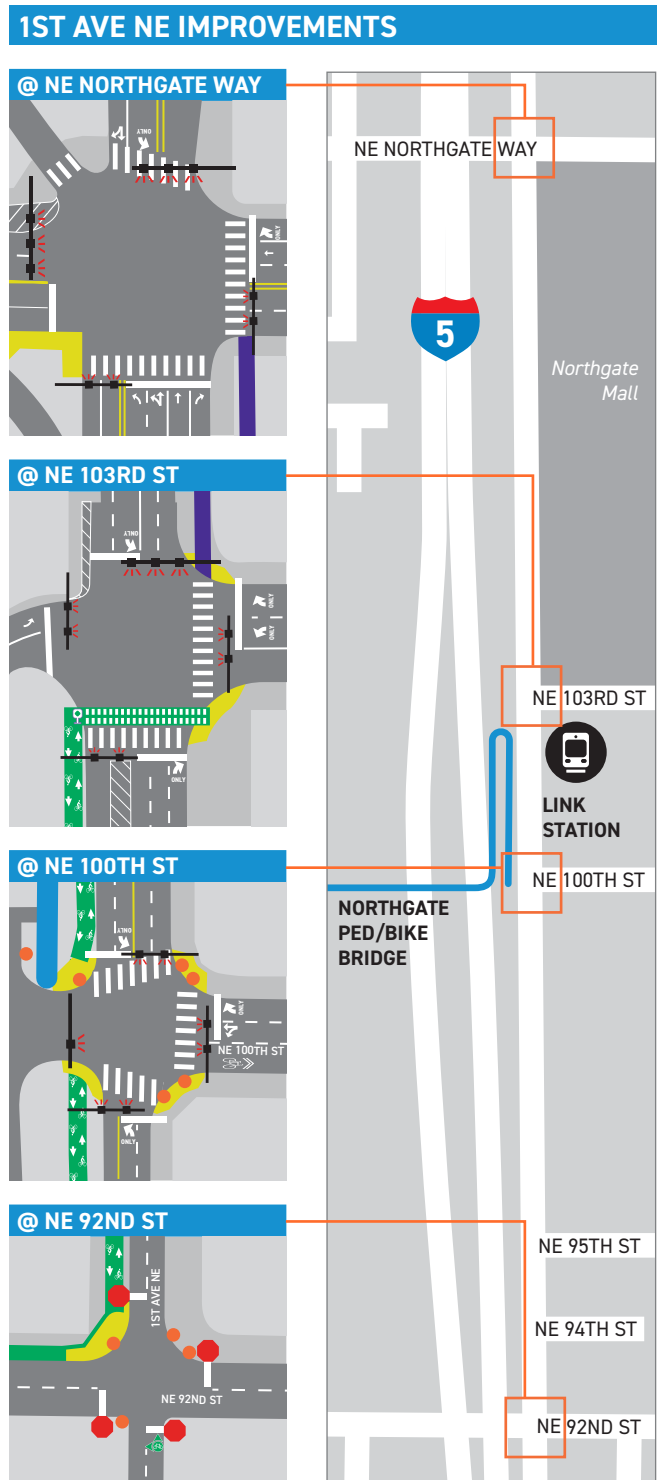
At NE 103rd St, people biking will use the crosswalk to access the east side of the street, where a multi-use path or widened sidewalk will continue north to Northgate Way.

1st Ave NE will have one vehicle travel lane in each direction with a left-turn pocket at 100th St. The existing transit center bus stops will be relocated to the east side of 1st Ave NE, between NE 100th and NE 103rd streets. King County Metro plans to restore transit stops on 1st in 2021.

### NORTH SEATTLE'S GROWING BIKE NETWORK

Once complete, the PBL will connect with the new Northgate Bridge at NE 100th St, the existing bike lanes on 92nd, and other community connections in the area (see map on reverse). These improvements will provide easy access to regional transit and to the citywide network of walking and biking routes.

Protected bike lanes combine the elements of a multi-use path with a conventional bike lane. They provide space for bikes that is separated from vehicles, parking lanes, and sidewalks.



**LEGEND**

Stop sign	Existing bike lanes	Multi-use path
Traffic light	Bike push button and crossing	Curb bulb
Northgate Ped/Bike Bridge	Bike direction indicator	Curb ramp
New PBL		

## OTHER WALKING AND BIKING INVESTMENTS

Through our Safe Routes to School, Neighborhood Greenway, and sidewalk programs, we're building a network of safe walking and biking routes in this bustling North Seattle community. Projects shown on the map at right are on separate and variable schedules.

## WHAT'S HAPPENING NEXT?

Northgate Bridge construction is scheduled to begin in mid-2019 and be complete prior to the opening of the Link light rail station in 2021. 1st Ave NE construction will likely be one of the last phases of work.

## BRIDGE PROJECT BACKGROUND

We're adding a new, accessible, all ages and abilities pedestrian and bike bridge over Interstate 5 (I-5) in North Seattle. The Northgate Ped/Bike Bridge will improve access to communities, services, and opportunities on the east and west sides of I-5 in Northgate and Licton Springs, helping knit together a historically divided area. It'll also reduce travel time for people walking and biking between the east and west sides of I-5.

When complete, the bridge will help connect the neighborhood's thriving job and retail centers with the rest of the city and region. The new bridge will span roughly 1,900 feet over I-5, landing at North Seattle College on the west side and at 1st Ave NE and NE 100th St, with a connection to the Northgate light rail station's mezzanine level.

## STAY INVOLVED

Have more questions? Interested in receiving project updates? Email or call us using the information at the bottom of this page.



- 1 ● Northgate ped/bike bridge
- 2 ● Multi-use path
- 3 ● Safe Routes to School Neighborhood Greenway
- 4 ● Crossing improvements
- 5 ● Protected bike lane
- 6 ● Sidewalk
- 7 ● Pedestrian pathway
- 8 ● North Seattle Neighborhood Greenway (west to Crown Hill)
- 9 ● Northgate Neighborhood Greenway—Maple Leaf connection
- 10 ● Northgate Neighborhood Greenway—Pinehurst connection
- 11 ● Street concept plan (improvements to be built by private development)
- 12 ● Existing bike lanes

## RELATED PROJECTS

**SOUND TRANSIT NORTHGATE STATION** The Sound Transit Northgate Station will be located east of 1st Ave NE, spanning across NE 103rd St. Station entrances will be on the Northgate Mall property (north of 103rd St) and near the Northgate Transit Center south of NE 103rd St. For more information about this project, email [northlink@soundtransit.org](mailto:northlink@soundtransit.org), call 206-398-5300, or visit [www.soundtransit.org/northgatestation](http://www.soundtransit.org/northgatestation).

**NORTHGATE NEIGHBORHOOD GREENWAY** [www.seattle.gov/transportation/projects-and-programs/programs/greenways-program/northgate](http://www.seattle.gov/transportation/projects-and-programs/programs/greenways-program/northgate)

**NORTHGATE TRANSIT-ORIENTED DEVELOPMENT** [www.kingcounty.gov/depts/transportation/planning/tod/northgate.aspx](http://www.kingcounty.gov/depts/transportation/planning/tod/northgate.aspx)

**IF YOU NEED THIS INFORMATION TRANSLATED**, please call (206) 615-1485. Si necesita traducir esta información al español, llame al (206) 615-1485.

Nếu quý vị cần thông tin này chuyển ngữ sang tiếng Việt xin gọi (206) 615-1485. 당신이 번역이 정보를 필요로하는 경우에, (206) 615-1485로 전화 해주십시오.

## PROJECT INFORMATION AND CONTACT

[NorthgateBridge@seattle.gov](mailto:NorthgateBridge@seattle.gov), (206) 615-1485  
[www.seattle.gov/transportation/northgate-pedestrian-and-bicycle-bridge](http://www.seattle.gov/transportation/northgate-pedestrian-and-bicycle-bridge)

