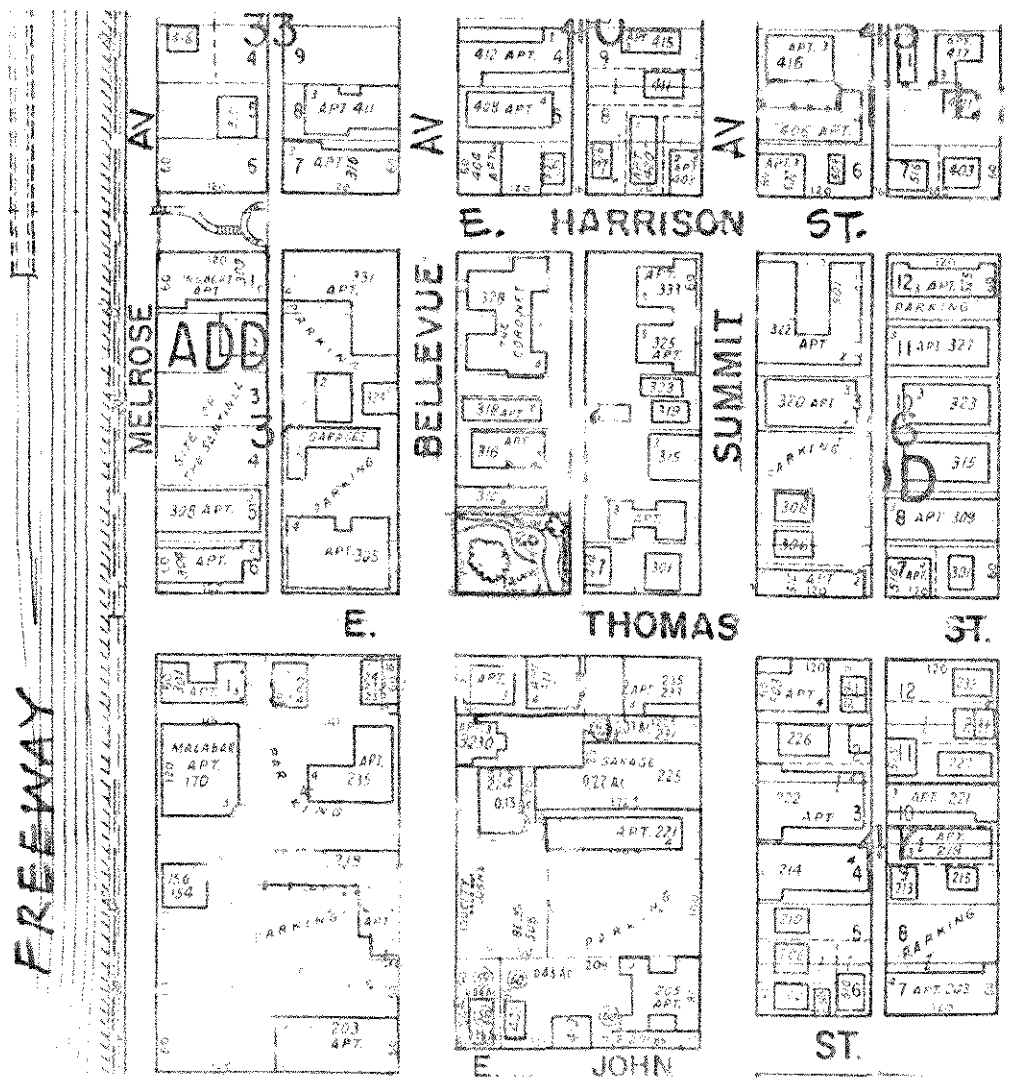


Named by C.I.P./Planning staff  
 Name is derived from adjacent street which was named by John Denny to honor his se



- Features:
- 40' diam.
  - Huge 100+yr. old Horse Chestnut
  - Brick patio w/ benches + table
  - Lawn "mound"
  - Planting beds
  - 2 Lights
  - 18" diam. Cherry tree

0.32 Ac.

Purch. 1970 ↑

306 Bellevue Ave.

Foreman 583-2797

# THOMAS MINI-PARK

123173