






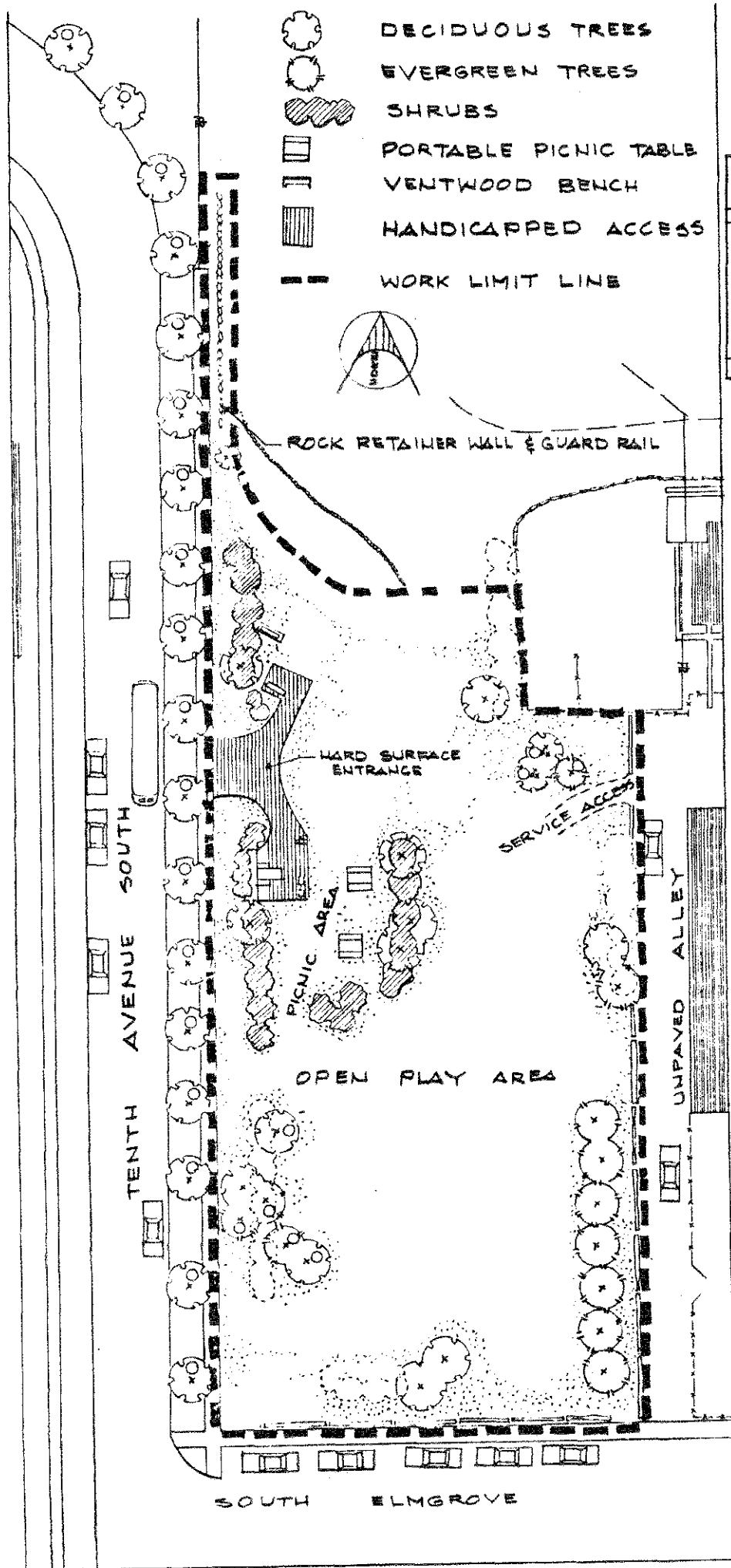
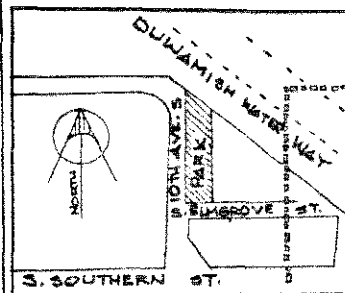


Legend

-  DECIDUOUS TREES
-  EVERGREEN TREES
-  SHRUBS
-  PORTABLE PICNIC TABLE
-  VENTWOOD BENCH
-  HANDICAPPED ACCESS
-  WORK LIMIT LINE



YEAR OF IMPROVEMENT: 1981
 COST OF IMPROVEMENT: \$ 37,720.10
 DESIGNER: OSBORN & RAY, PLANNERS, INC.
 CONTRACTOR: D. R. CRAIG CONST.
 SIZE: 36,000 sq. ft. (APPROX.)