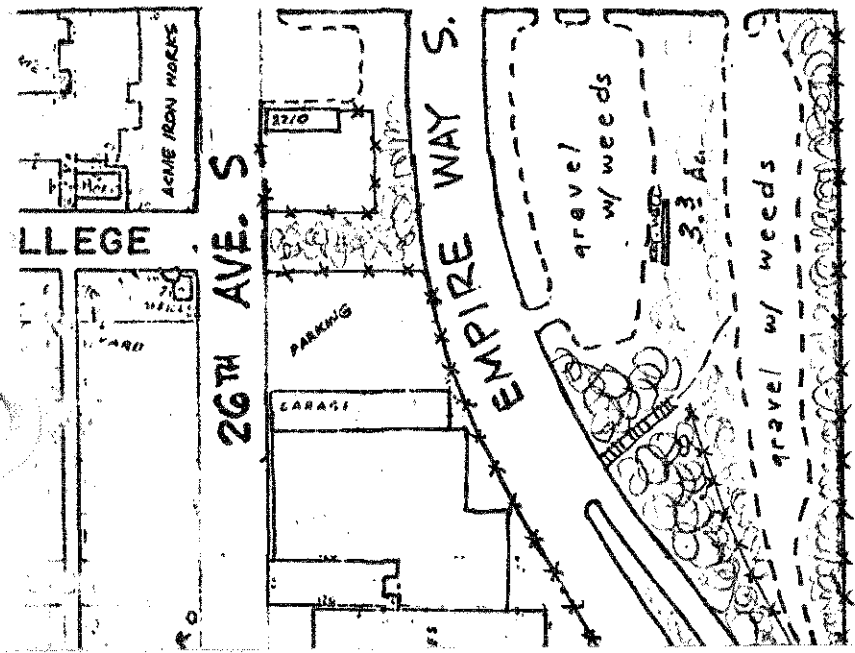
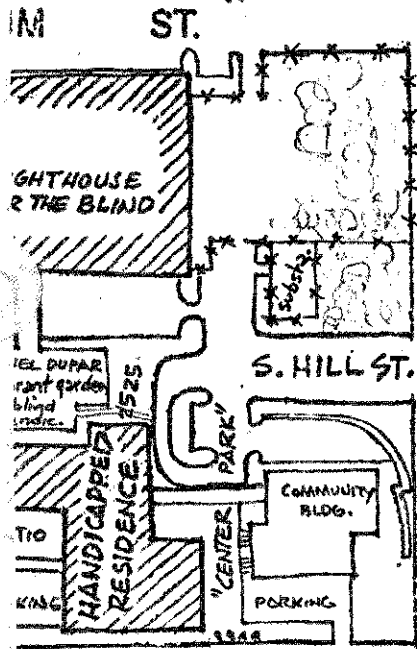


**BRADNER P.G.**  
1.9 Acres / Purch. from School Dist. 1971: \$51,200 = (1889 Plst. Dedic. - School purp.)

**TENNIS CENTER**  
5.5 Acres

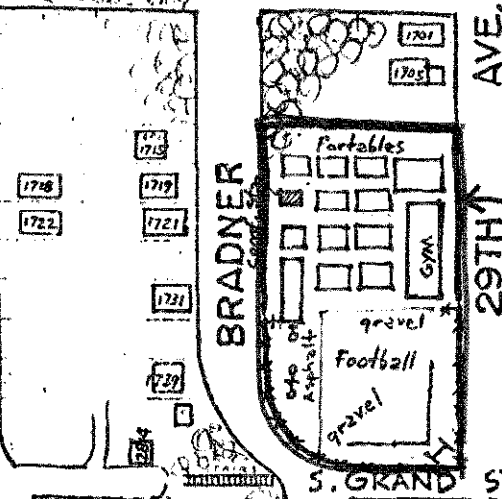
Tract 1975: B.O.R. for perpetual use for park + recn. purp. (Stadium Home, Inc. 1953)

V. RED CROSS



28 AV. S.

S. MASSACHUSETTS ST.



S. GRAND ST.

